

VALVOLE OLEODINAMICHE

HYDRAULIC VALVES



CATALOGO TECNICO "ADJ"

INDICE – CONTENTS

GENERALITÀ	2
LA GAMMA - TYPE OF VALVE	2
CAMPI DI APPLICAZIONE – APPLICATION FIELDS	2
AFFIDABILITÀ - RELIABILITY.....	3
Pulizia dell'impianto - Cleaning the hydraulic circuit	3
Temperatura - Operating temperature	3
Olio – Oil.....	3
Viscosità – Viscosity.....	3
Filtrazione – Filtration.....	3
AVVERTENZE - WARNING	23

GENERALITÀ

La GHIM Hydraulics, è in grado di fornire una vasta gamma di valvole oleodinamiche

LA GAMMA - TYPE OF VALVE

Sono attualmente disponibili le seguenti famiglie di prodotti:

GAMMA – TYPE	
IT	Descrizione – Description
1	Valvola Blocco Semplice Effetto Pilotata - Cilindrica – (Single Pilot Operated Check Valve Cylinder)
2	Valvola Blocco Semplice Effetto Pilotata - By-Pass – (Single Pilot Operated Check Valve with By-Pass)
3	Valvola Blocco Semplice Effetto Pilotata – (Single Pilot Operated Check Valve)
4	Valvola Blocco Semplice Effetto Pilotata DIN 2353 – (Single Pilot Operated Check Valve DIN 2353)
5	Valvola Blocco Doppio Effetto Pilotata - Cilindrica – (Double Pilot Operated Check Valve Cylinder)
6	Valvole Blocco Doppio Effetto - Pilotata – (Valve Double Effects - Piloted)
7	Valvole Blocco Doppio Effetto – Pilotata DIN 2353 – (Valve Double Effects – Piloted DIN 2353)
8	Valvole Unidirezional – (One Direction Valve)
9	Valvole Unidirezionale Cartuccia – (Cartridge One Direction Valve)
10	Valvole Controllo Discesa - “Cartuccia” – (Load Control Valve - “Cartridge”)
11	Valvole Controllo Discesa “Femmina – Femmina” – (Load Control Valve “Female – Female”)
12	Valvole Controllo Discesa “Femmina – Maschio” – (Load Control Valve “Female – Male”)
13	Cartuccia Valvola Paracadute – (Hose Burst Chartdridge Valve)
14	Valvole Paracadute “Femmina – Femmina” – (Hose Burst Valve “Female – Female”)
15	Valvole Paracadute “Femmina – Maschio” – (Hose Burst Valve “Female – Male”)
16	Valvola Ritegno a Cartuccia – (Cartridge Retain Valve)
17	Cartuccia Valvola Massima Pressione – (Cartridge Max Pressure Valve)
18	Valvola Massima Pressione – (Max Pressure Valve)
21	Valvole Sequenza – (Sequence Valve)
22	Valvole Ammortizzatrici – (Valve)
23	Valvole di Esclusione di Alta-Bassa Pressione – (Two Pump High-Low Unloadong Valves)
24	Valvole Overcenter Semplice Effetto – (Valve Overcenter Simple Effects)
25	Valvole Overcenter Doppio Effetto – (Valve Overcenter Double Effects)
27	Valvole Riduttrici di pressione – (Reduction Pressure Valves)
28	Valvole Riduttrici di pressione – (Reduction Pressure Valves)
29	Valvole Antiurto

Tabella 1 (Tipi di Distributori e Deviatori - Type of Valve)

CAMPI DI APPLICAZIONE – APPLICATION FIELDS

I campi di applicazione di queste valvole oleodinamiche sono molteplici e spaziano principalmente nei settori dell'INDUSTRIA, dell'AGRICOLTURA, dei TRASPORTI, MILITARE e NAVALE.

Several kinds of applications are possible for these hydraulics valve, ranging mostly from industry, agriculture, transportations, military, ships, hobbies.

AFFIDABILITÀ - RELIABILITY

La curata progettazione seguita da prove di omologazione interna effettuate nei laboratori di prova hanno permesso la realizzazione di una serie di prodotti altamente affidabili e durevoli nel tempo.

The skillful development and the extensive and accurate tests performed on homologations benches and labs, resulted in a highly reliable and durable products.

PULIZIA DELL'IMPIANTO - CLEANING THE HYDRAULIC CIRCUIT

Si consiglia il flussaggio completo dell'impianto prima della messa in funzione o dopo aver effettuato lavori di riparazione.

We recommend that flushing of the system be carried out before operating a new system or after repairs.

TEMPERATURA - OPERATING TEMPERATURE

Temperatura ambiente: -20°C / +50°C

L'olio può raggiungere valori compresi tra -20°C e +80°C.

Ambient temperature: -20°C / +50°C

Oil temperature should be kept above -20°C and below 80°C.

OLIO - OIL

Utilizzare esclusivamente olio idraulico a base minerale ISO 6743/4 (DIN 51524)

Use only ISO 6743/4 (DIN 51524) hydraulic mineral oil

VISCOSITÀ - VISCOSITY

Viscosità olio consigliata: 46 mm²/s

Viscosità minima: 15 mm²/s

Viscosità massima: 100 mm²/s

Viscosità secondo i parametri ISO 3448 (DIN 51519)

FILTRAZIONE - FILTRATION

Filtrazione consigliata 15µm

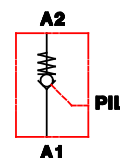
Classe contaminazione 18/14 ISO 4406 (9 NAS 1638)

Advise filtration 15µm

Contamination Class 18/14 ISO 4406 (9 NAS 1638)

ADJ-B1

VALVOLA BLOCCO SEMPLICE EFFETTO PILOTATA - CILINDRICA
SINGLE PILOT OPERATED CHECK VALVE CYLINDER

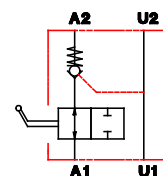


Order Code	Flow (l/min)	Working Pressure (bar)		Dimension (mm)					Weight (kg)	
		Max	Peak	A1 A2	Pil	Lenght	CH Exag.	Pilot Ratio		
ADJ-B1-0004	15	320	320	1/4"G	1/4"G				1:4	
ADJ-B1-0006	30	320	320	3/8"G	1/4"G				1:4	
ADJ-B1-0008	45	300	300	1/2"G	1/4"G				1:4	
ADJ-B1-0012	65	250	250	3/4"G	1/4"G				1:4	

Tabella 2 (Valvola blocco semplice effetto pilotata cilindrica – Single pilot operated check valve cylinder)

ADJ-B8

VALVOLA BLOCCO SEMPLICE EFFETTO PILOTATA - BY-PASS
SINGLE PILOT OPERATED CHECK VALVE WITH BY-PASS

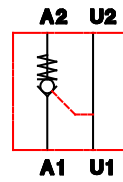


Order Code	Flow (l/min)	Working Pressure (bar)		Dimension (mm)						Weight (kg)	
		Max	Peak	A1 U1	A2 U2	B	S	H	-		Pilot Ratio
ADJ-B8-0004	25	350	350	1/4"G	1/4"G					1:4	
ADJ-B8-0006	25	350	350	3/8"G	3/8"G					1:4	
ADJ-B8-0007	50	300	300	1/2"G	1/2"G					1:4	
ADJ-B8-0008	50	300	300	3/4"G	3/4"G					1:4	

Tabella 3 (Valvola blocco semplice effetto pilotata - by-pass – Single pilot operated check valve with by-pass)

ADJ-B5

VALVOLA BLOCCO SEMPLICE EFFETTO PILOTATA
SINGLE PILOT OPERATED CHECK VALVE

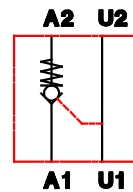


Order Code	Flow (l/min)	Working Pressure (bar)		Dimension (mm)									Weight (kg)
		Max	Peak	A1 U1	A2 U2	B	L	M	N	P	T	Pilot Ratio	
ADJ-B5-0004	15	320	320	1/4"G	1/4"G	30	60	6.5	28	22	40	1:4	0.61
ADJ-B5-0006	35	320	320	3/8"G	3/8"G	35	70	6.5	29	23	50	1:4	0.61
ADJ-B5-0007	45	300	300	1/2"G	1/2"G	35	80	6.5	33	26	50	1:4	1.04
ADJ-B5-0008	70	210	210	3/4"G	3/4"G	40	100	8.5	42	32	50	1:4	1.23

Tabella 4 (Valvola blocco semplice effetto pilotata – Single pilot operated check valve)

ADJ-B6

VALVOLA BLOCCO SEMPLICE EFFETTO PILOTATA DIN 2353
SINGLE PILOT OPERATED CHECK VALVE DIN 2353

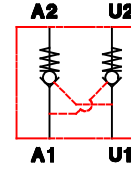


Order Code	Flow (l/min)	Working Pressure (bar)		Dimension (mm)									Weight (kg)
		Max	Peak	A1 U1	A2 U2	B	L	M	N	P	T	Pilot Ratio	
ADJ-B6-0004	15	320	320	12	1/4"G	30	63	5.5	30	30	40	1:4	0.61
ADJ-B6-0006	35	320	320	12	3/8"G	30	67	7	30	30	40	1:4	0.62

Tabella 5 (Valvola blocco semplice effetto pilotata – Single pilot operated check valve)

ADJ-K1

VALVOLA BLOCCO DOPPIO EFFETTO PILOTATA - CILINDRICA
DOUBLE PILOT OPERATED CHECK VALVE CYLINDER

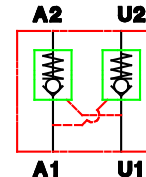


Order Code	Flow (l/min)	Working Pressure (bar)		Dimension (mm)							Weight (kg)	
		Max	Peak	A1 U1	A2 U2	Øest.	Lenght	CH	-	Pilot Ratio		
ADJ-K1-0006	35	320	320	3/8"G	3/8"G	45	156	38			1:4	

Tabella 6 (Valvola blocco semplice effetto pilotata cilindrica – Single pilot operated check valve cylinder)

ADJ-K5

VALVOLE BLOCCO DOPPIO EFFETTO - PILOTATA
VALVE DOUBLE EFFECTS - PILOTED

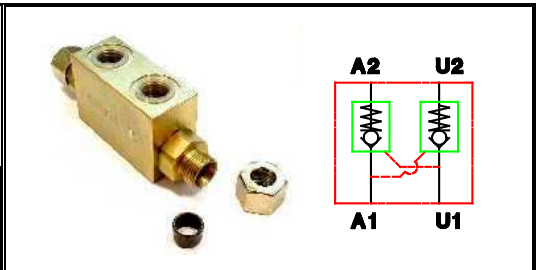


Order Code	Flow (l/min)	Working Pressure (bar)		Dimension (mm)									Weight (kg)
		Max	Peak	A1 U1	A2 U2	B	L	M	N	P	T	Pilot Ratio	
ADJ-K5-0004	20	350	350	1/4"G	1/4"G	30	63	5.5	21.5	21.5	40	1:4	
ADJ-K5-0006	20	350	350	3/8"G	3/8"G	35	67	7	21.5	21.5	40	1:4	
ADJ-K5-0008	50	300	300	1/2"G	1/2"G	35	80	6.5	32	32	50	1:4	
ADJ-K5-0012		300	300	3/4"G	3/4"G	40	100	8.5	41.5	41.5	60	1:4	

Tabella 7 (Valvola blocco semplice effetto pilotata – Single pilot operated check valve)

ADJ-K6

VALVOLE BLOCCO DOPPIO EFFETTO – PILOTATA DIN 2353
VALVE DOUBLE EFFECTS – PILOTED DIN 2353



Order Code	Flow (l/min)	Working Pressure (bar)		Dimension (mm)									Weight (kg)
		Max	Peak	A1 U1	A2 U2	B	L	M	N	P	T	Pilot Ratio	
ADJ-K6-0004	20	350	350	1/4"G	12	30	63	5.5	30	30	40	1:4	
ADJ-K6-0006	20	350	350	3/8"G	12	30	67	7	30	30	40	1:4	

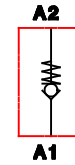
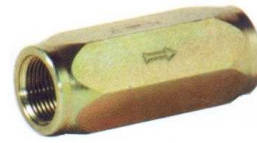
Tabella 8 (Valvola blocco semplice effetto pilotata – Single pilot operated check valve)



Picture 1 (Valvola blocco pilotata dimensioni – Check valve dimension)

ADJ-RU

VALVOLE UNIDIREZIONALI
ONE DIRECTION VALVE

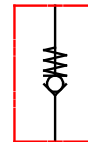


Order Code	Flow (l/min)	Working Pressure (bar)		Dimension (mm)			Weight (kg)
		Max	Peak	A1 A2	Lenght	Exag.	
ADJ-RU-0004	15	700	700	1/4"G			
ADJ-RU-0006	30	700	700	3/8"G			
ADJ-RU-0008	50	500	500	1/2"G			
ADJ-RU-0012	90	500	500	3/4"G			
ADJ-RU-0016	150	500	500	1"G			
ADJ-RU-0020	200	250	250	1 1/4"G			
ADJ-RU-0024	300	230	230	1 1/2"G			

Tabella 9 (Valvole unidirezionale – One direction valve)

ADJ-RC

VALVOLE UNIDIREZIONALE CARTUCCIA
CARTRIDGE ONE DIRECTION VALVE

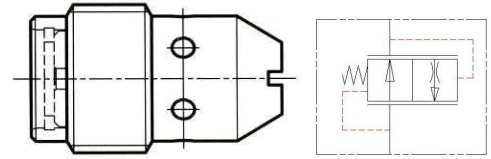


Order Code	Flow (l/min)	Working Pressure (bar)		Threads	Weight (kg)
		Max	Peak		
ADJ-RC-0004	15	350	350	1/4"G	
ADJ-RC-0006	30	350	350	3/8"G	
ADJ-RC-0008	50	320	320	1/2"G	
ADJ-RC-0012	80	280	280	3/4"G	

Tabella 10 (Valvole unidirezionale cartuccia – Cartridge one direction valve)

ADJ-T1

VALVOLE CONTROLLO DISCESA - "CARTUCCIA"
LOAD CONTROL VALVE - "CARTRIDGE"

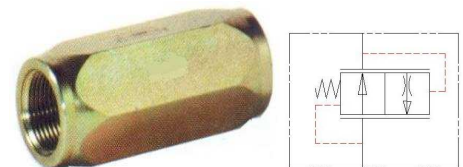


Order Code	Flow (l/min)	Working Pressure (bar)		Threds	Tightening Torque (Nm)	Weight (kg)
		Max	Peak			
ADJ-T1-0004	12	250	250	1/4"G	2	0.015
ADJ-T1-0006	18	250	250	3/8"G	3	0.022
ADJ-T1-0008	47	210	210	1/2"G	4	0.048

Tabella 11 (Valvole controllo discesa "cartuccia"– Load control valve "cartridge")

ADJ-T2

VALVOLE CONTROLLO DISCESA "FEMMINA – FEMMINA"
LOAD CONTROL VALVE "FEMALE – FEMALE"

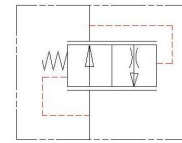


Order Code	Flow (l/min)	Working Pressure (bar)		Dimension (mm)			Weight (kg)
		Max	Peak	A1 A2	CH	-	
ADJ-T2-0004	12	250	250	1/4"G	19		
ADJ-T2-0006	18	250	250	3/8"G	25		
ADJ-T2-0008	47	210	210	1/2"G	28		

Tabella 12 (Valvole controllo discesa femmina - femmina – Load control valve female – female)

ADJ-T3

VALVOLE CONTROLLO DISCESA "FEMMINA – MASCHIO"
LOAD CONTROL VALVE "FEMALE – MALE"

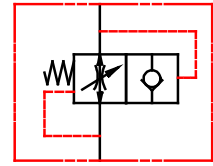


Order Code	Flow (l/min)	Working Pressure (bar)		Dimension (mm)			Weight (kg)
		Max	Peak	A1 A2	CH		
ADJ-T3-0004	12	250	250	1/4"G	19		0.08
ADJ-T3-0006	18	250	250	3/8"G	25		0.10
ADJ-T3-0008	47	210	210	1/2"G	28		0.15

Picture 2 (Valvole controllo discesa femmina - maschio – Load control valve female – male)

ADJ-X6

CARTUCCIA VALVOLA PARACADUTE
HOSE BURST CHARTDRIDGE VALVE

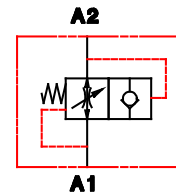


Order Code	Flow (l/min)	Working Pressure (bar)		Threds	Weight (kg)
		Max	Peak		
ADJ-X6-0004	25	350	350	1/4"G	
ADJ-X6-0006	50	350	350	3/8"G	
ADJ-X6-0008	80	350	350	1/2"G	
ADJ-X6-0012	140	300	300	3/4"G	
ADJ-X6-0016	200	250	250	1"G	

Tabella 13 (Valvole paracadute – Hose burst valve)

ADJ-X4

VALVOLE PARACADUTE "FEMMINA – FEMMINA"
HOSE BURST VALVE "FEMALE – FEMALE"

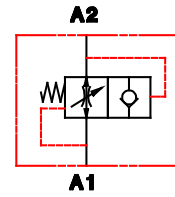


Order Code	Flow (l/min)	Working Pressure (bar)		Dimension (mm)					Weight (kg)
		Max	Peak	A1 A2	CH	-	-	-	
ADJ-X4-0004	25	350	350	1/4"G					
ADJ-X4-0006	50	350	350	3/8"G					
ADJ-X4-0008	80	350	350	1/2"G					
ADJ-X4-0012	140	300	300	3/4"G					
ADJ-X4-0016	200	250	250	1"G					

Tabella 14 (Valvole paracadute femmina - femmina – Hose burst valve female - female)

ADJ-X5

VALVOLE PARACADUTE "FEMMINA – MASCHIO"
HOSE BURST VALVE "FEMALE – MALE"

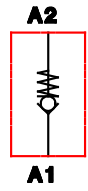


Order Code	Flow (l/min)	Working Pressure (bar)		Dimension (mm)					Weight (kg)
		Max	Peak	A1 A2	CH	-	-	-	
ADJ-X5-0004	25	350	350	1/4"G	19				
ADJ-X5-0006	50	350	350	3/8"G	22				
ADJ-X5-0008	80	350	350	1/2"G	27				
ADJ-X5-0012	140	300	300	3/4"G	32				
ADJ-X5-0016	200	250	250	1"G	41				

Tabella 15 (Valvole paracadute femmina - maschio – Hose burst valve female - male)

ADJ-RC

VALVOLA RITEGNO A CARTUCCIA
CARTRIDGE RETAIN VALVE



Order Code	Flow (l/min)	Working Pressure (bar)		Dimension (mm)			Weight (kg)
		Max	Peak	A	B	C	
ADJ-RC-0004	20	300	300	1/4"G			
ADJ-RC-0006	40	300	300	3/8"G			
ADJ-RC-0008	80	250	280	1/2"G			

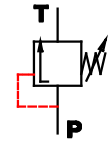
Tabella 16 (Valvola ritegno a cartuccia – Cartridge check valve)



Picture 3 (Sede cartuccia valvola ritegno – Cartridge retain valve housing)

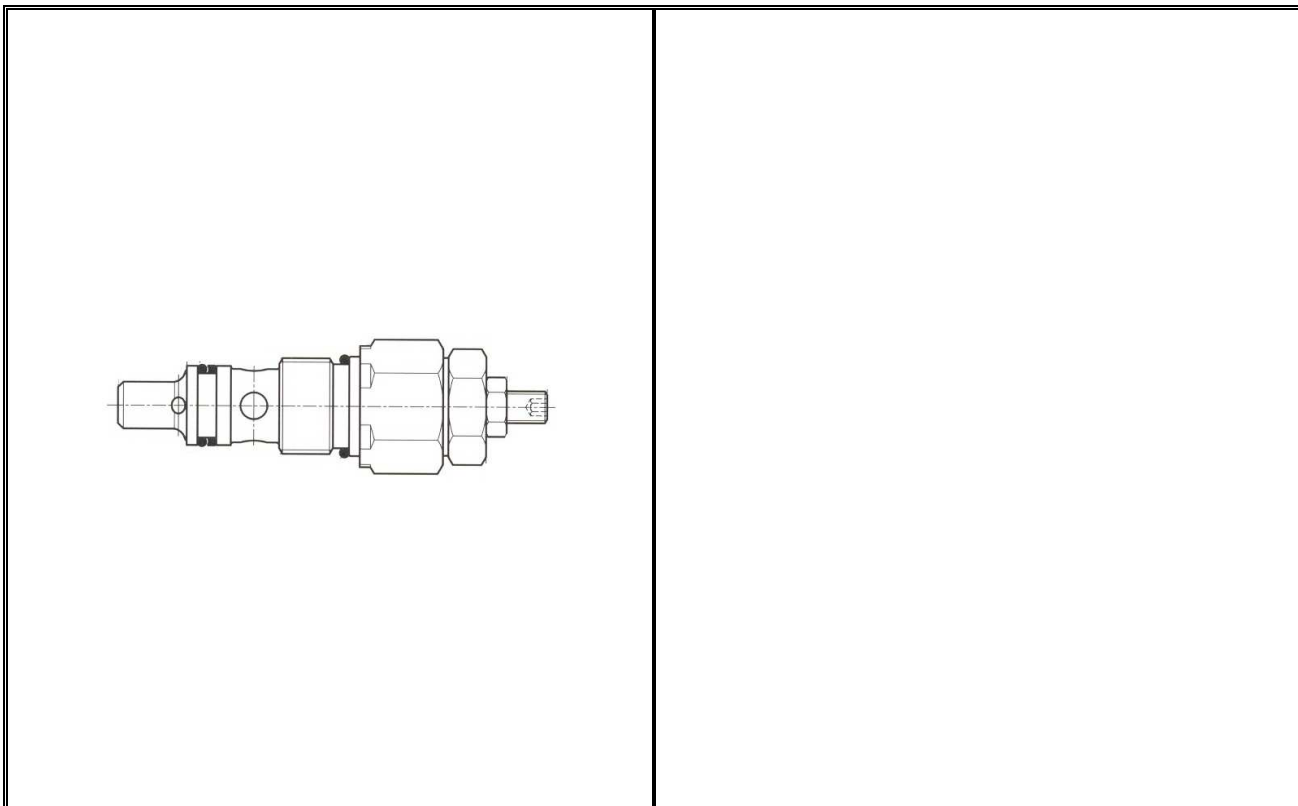
ADJ-VC

CARTUCCIA VALVOLA MASSIMA PRESSIONE
CARTRIDGE MAX PRESSURE VALVE



Order Code	Flow (l/min)	Working Pressure (bar)		Dimension (mm)					Weight (kg)
		Max	Peak	A	B	C	D	Exag. CH	
ADJ-VC-1006	20	350	350	M18x1,5				22	0.11
ADJ-VC-1008	30	350	350	M20x1,5				22	0.15
ADJ-VC-1012	80	250	250	M24x1,5				27	0.35

Tabella 17 (Cartuccia Valvola massima pressione – Max pressure valve)



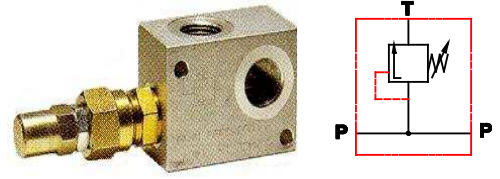
Picture 4 (Sede cartuccia valvola massima pressione – Cartridge Max pressure valve housing)

Edizione 08.2010 - VCT_ADJ_AB_IT

© Copyright – Riproduzione anche parziale vietata.

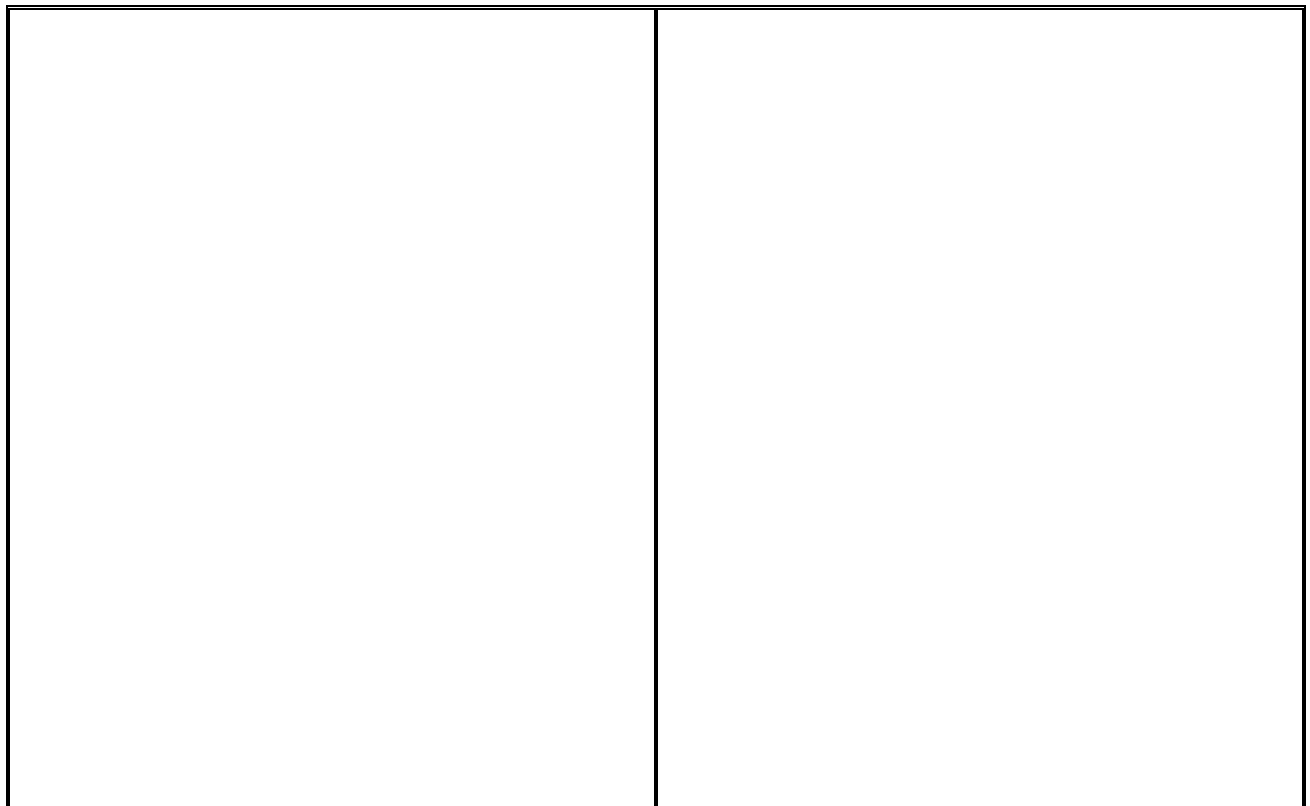
ADJ-VM

VALVOLA MASSIMA PRESSIONE
MAX PRESSURE VALVE



Order Code	Flow (l/min)	Working Pressure (bar)		Dimension (mm)			Weight (kg)
		Max	Peak	P T	B	C	
ADJ-VM-0004	20	350	350	1/4"G			
ADJ-VM-0006	20	350	350	3/8"G			
ADJ-VM-0007	35	350	350	3/8"G			
ADJ-VM-0008	35	350	350	1/2"G			
ADJ-VM-0009	80	250	250	1/2"G			
ADJ-VM-0012	80	250	250	3/4"G			

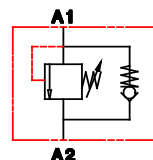
Tabella 18 (Valvola massima pressione – Max pressure valve)



Picture 5 (Dimensioni valvola massima pressione – Max pressure valve Dimension)

ADJ-S1

VALVOLE SEQUENZA
SEQUENCE VALVE



Order Code	Flow (l/min)	Working Pressure (bar)			Dimension (mm)				Weight (kg)
		From	To	Max	A1 A2	-	-	-	
ADJ-S1-2504	50	25	80	210	1/4"G				
ADJ-S1-2506	50	25	80	210	3/8"G				
ADJ-S1-2508	50	25	80	210	1/2"G				0.54
ADJ-S1-3504	35	35	180	350	1/4"G				
ADJ-S1-3506	35	35	180	350	3/8"G				0.73
ADJ-S1-3508	35	35	180	350	1/2"G				0.71
ADJ-S1-7004	35	70	210	350	1/4"G				
ADJ-S1-7006	35	70	210	350	3/8"G				0.73
ADJ-S1-7008	35	70	210	350	1/2"G				0.71

Tabella 19 (Valvole sequenza – Sequence valve)



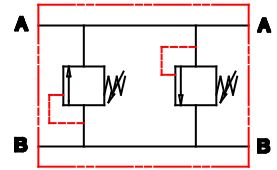
Picture 6 (Valvole sequenza dimensioni – Sequence valve dimension)

Edizione 08.2010 - VCT_ADJ_AB_IT

© Copyright – Riproduzione anche parziale vietata.

ADJ-AM

VALVOLE AMMORTIZZATRICI
VALVE



Order Code	Flow (l/min)	Working Pressure (bar)		IN	OUT	Dimension (mm)					Weight (kg)
		Max.	Peak			L	L1	L2	H	S	
ADJ-AM-1004	30	180	180	1/4"G	1/4"G	60	164	25.5	70	30	
ADJ-AM-1006	45	180	180	3/8"G	3/8"G	80	218	33	70	30	
ADJ-AM-1008	70	180	180	1/2"G	1/2"G	80	218	38	70	30	
ADJ-AM-1012	110	180	180	3/4"G	3/4"G	96	233	44	80	35	
ADJ-AM-1016	160	180	180	1"G	1"G	120	204	53	120	50	

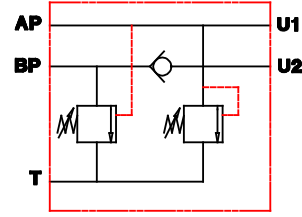
Tabella 20 (Valvole ammortizzatrici – Valve)



Picture 7 (Valvole ammortizzatrici dimensioni – Valve dimension)

ADJ-EH

VALVOLE DI ESCLUSIONE DI ALTA-BASSA PRESSIONE
TWO PUMP HIGH-LOW UNLOADING VALVES



Order Code	Flow (l/min)	Working Pressure (bar)		Dimension (mm)														Weight (kg)
		Ap	Bp	AP	BP	U1 U	T	U2 M	A	B	Spess	D	E	F - H	G - I	L	N	
ADJ-EH-0040	30	180-350	20-70	1/4"G	3/8"G	3/8"G	1/2"G	1/4"G	90	98	40	60	158	19	26	38	6	M6
ADJ-EH-0060	55	180-350	0-50	3/8"G	1/2"G	1/2"G	3/4"G	1/4"G	100	120	50	86	186	19	36	40	6	M9
ADJ-EH-0080	100	180-350	0-50	1/2"G	3/4"G	3/4"G	1"G	1/4"G	130	150	60	72	222	30	40	58	6	M8
ADJ-EH-0120	180	180-350	20-70	3/4"G	1"G	1"G	1 1/4"G	1/4"G	160	180	70	85	265	30	58	60	10	M8
ADJ-EH-0121	260	180-350	20-70	3/4"G	1 1/4"G	1 1/4"G	1 1/2"G	1/4"G	180	200	80	85	285	35	60	70	10	M8

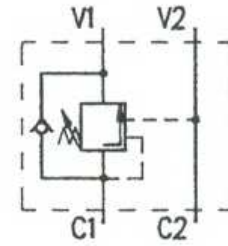
Tabella 21 (Valvole esclusione di alta-bassa pressione – Two pump high-low unloading valves)



Picture 8 (Valvole esclusione di alta-bassa pressione dimensioni – Two pump high-low unloading valves dimension)

ADJ-OW

VALVOLE OVERCENTER SEMPLICE EFFETTO
VALVE OVERCENTER SIMPLE EFFECTS



Order Code	Flow (l/min)	Working Pressure (bar)		Threads	Effects	Dimension (mm)			Weight (kg)
		Max.	From-To			A	B	C	
ADJ-OW-1004	30	210	40-250	1/4"G	Simple	30	60	10	0.62
ADJ-OW-1006	35	210	40-250	3/8"G		30	56	9	0.58
ADJ-OW-1008	38	210	40-250	1/2"G		38	65	13,5	0.60

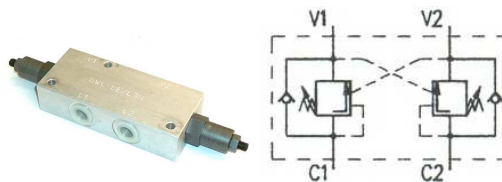
Tabella 22 (Valvole overcenter semplice effetto – Valve overcenter simple effects)



Picture 9 (Valvole overcenter semplice effetto dimensioni – Valve overcenter simple effects dimension)

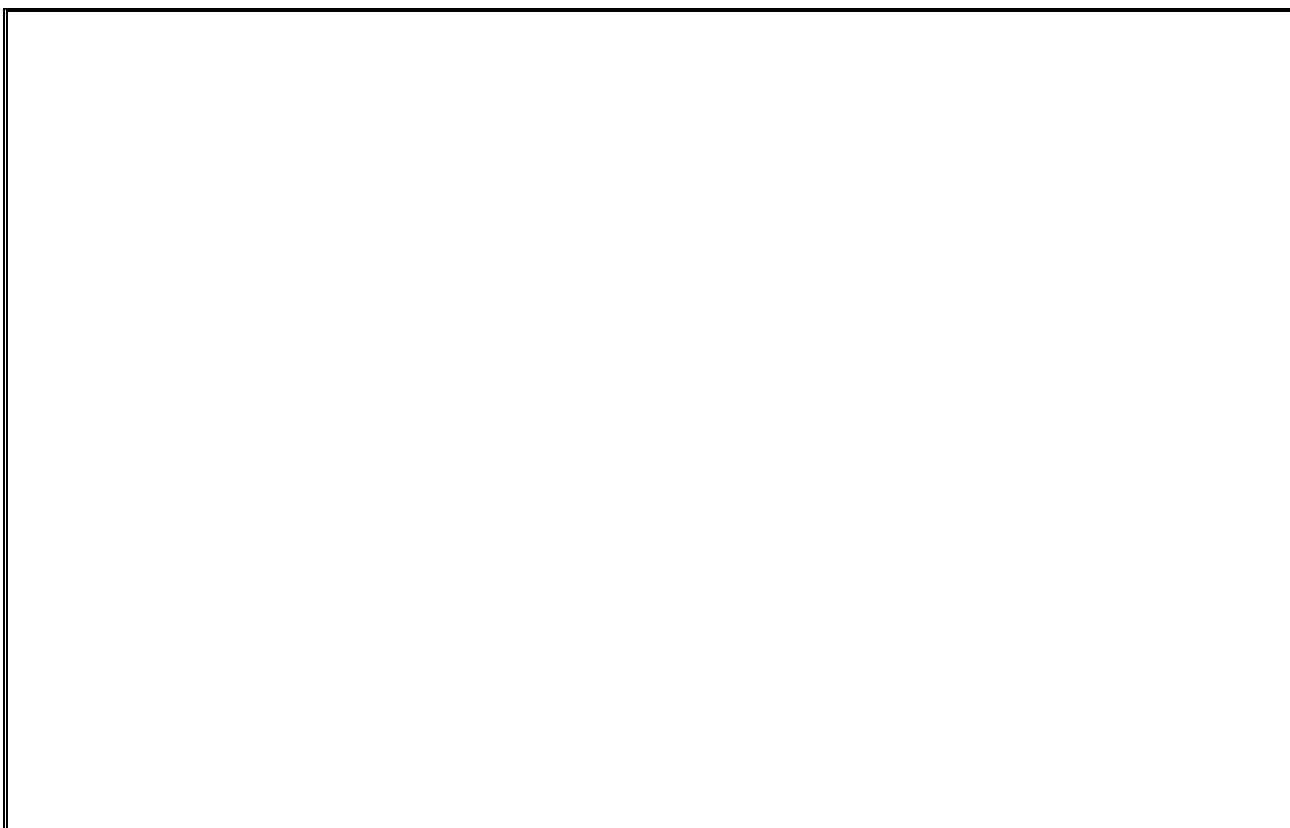
ADJ-OW

VALVOLE OVERCENTER DOPPIO EFFETTO
VALVE OVERCENTER DOUBLE EFFECTS



Order Code	Flow (l/min)	Working Pressure (bar)		Threds	Effects	Dimension (mm)			Weight (kg)
		Max.	From-To			A	B	C	
ADJ-OW-2004	30	210	40-250	1/4"G	Double	30	60	10	0.62
ADJ-OW-2006	30	210	40-250	3/8"G		30	56	10	0.58
ADJ-OW-2008	38	210	40-250	1/2"G		38	65	13,5	0.60

Tabella 23 (Valvole overcenter doppio effetto – Valve overcenter double effects)



Picture 10 (Valvole overcenter doppio effetto dimensioni – Valve overcenter double effects dimension)

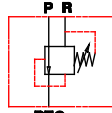
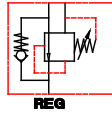
ADJ-PM														
VALVOLE RIDUTTRICI DI PRESSIONE														
REDUCTION PRESSURE VALVES														
Order Code	Flow (l/min)	Working Pressure (bar)		Dimension (mm)								Weight (kg)		
		Max.	Field	P	REG	R Tank	-	-	-	-	Scheme			
ADJ-PM-0006	20	210	5-105	3/8"G	3/8"G	3/8"G								0.85
ADJ-PM-1006	20	210	210	3/8"G	3/8"G	3/8"G								

Tabella 24 (Valvole riduttrici di pressione – Reduction pressure valves)

ADJ-PM													
VALVOLE RIDUTTRICI DI PRESSIONE CON RITEGNO													
REDUCTION PRESSURE VALVES													
Order Code	Flow (l/min)	Working Pressure (bar)		Dimension (mm)								Weight (kg)	
		Max.	Field	P	Reg	D Tank							
ADJ-PR-0008													
ADJ-PR-0012													
ADJ-PD-5080													
ADJ-PD-5120													

Tabella 25 (Valvole riduttrici di pressione pilotate – Reduction pressure pilot valves)

AVVERTENZE - WARNING

La presente **Edizione 08.2010** del catalogo "ADJ" annulla e sostituisce ogni precedente.

Le dimensioni e l'esecuzione degli articoli contenuti in questo catalogo sono suscettibili di modifiche eseguite a nostra discrezione e senza obbligo di avviso preventivo. I disegni contenuti in questo catalogo si intendono di proprietà riservata. Indicare sempre negli ordini i nostri codici. Le condizioni generali di vendita sono specificate sul Listino prezzi in vigore al momento.

Current Edition "**Edizione 08.2010**" of our catalogue "ADJ" is replacing any previous document.

Dimensions and other specifications contained in this catalogue are suitable of modification at our discretion without previous notice. Drawings contained in this catalogue are subject to copyright Always mention our ordering codes or part numbers. General sales conditions are specified in our currently valid price list.